

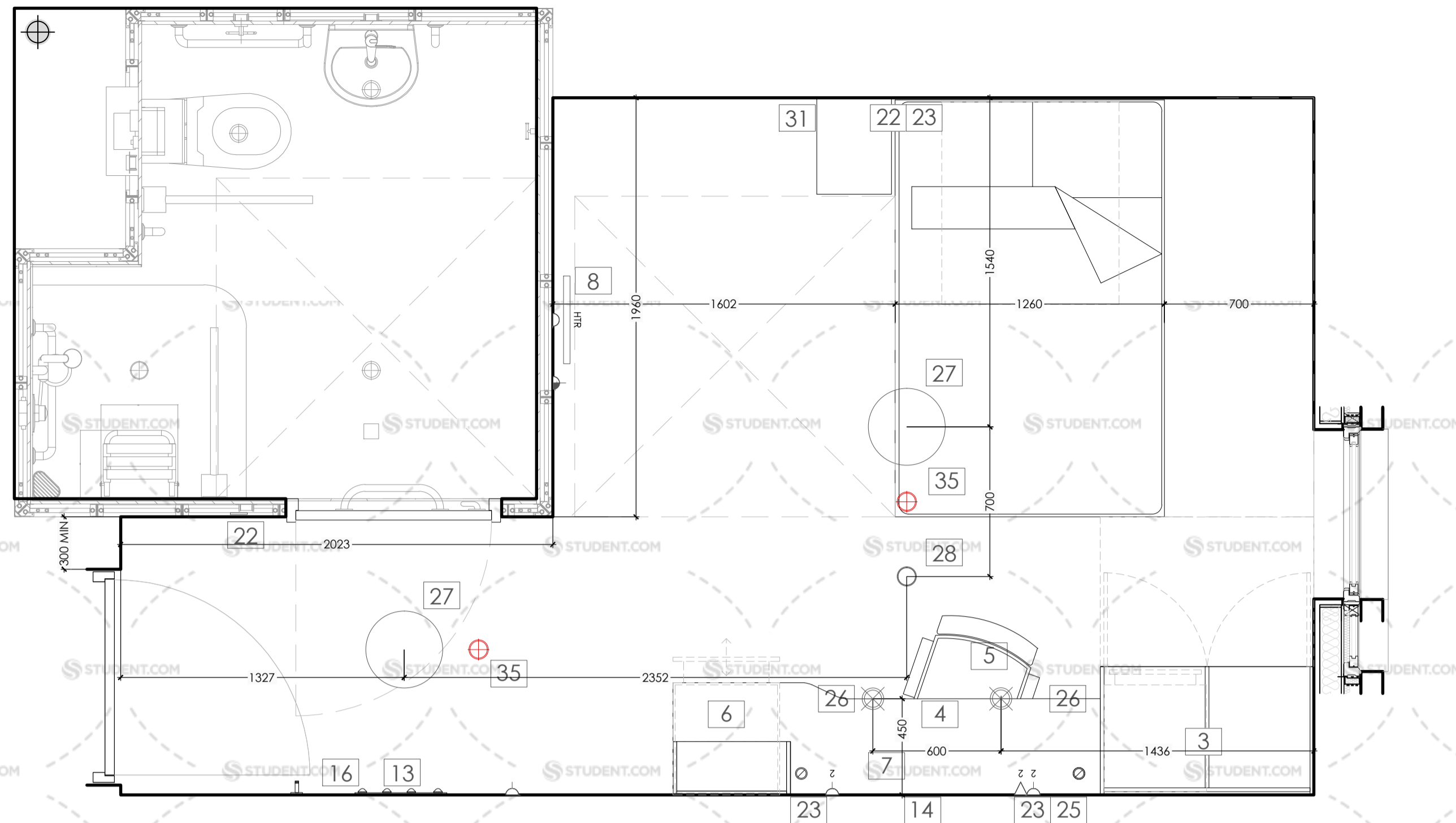
13598-42-01 to 03 for ROOM TYPE LOCATIONS

PLEASE NOTE:

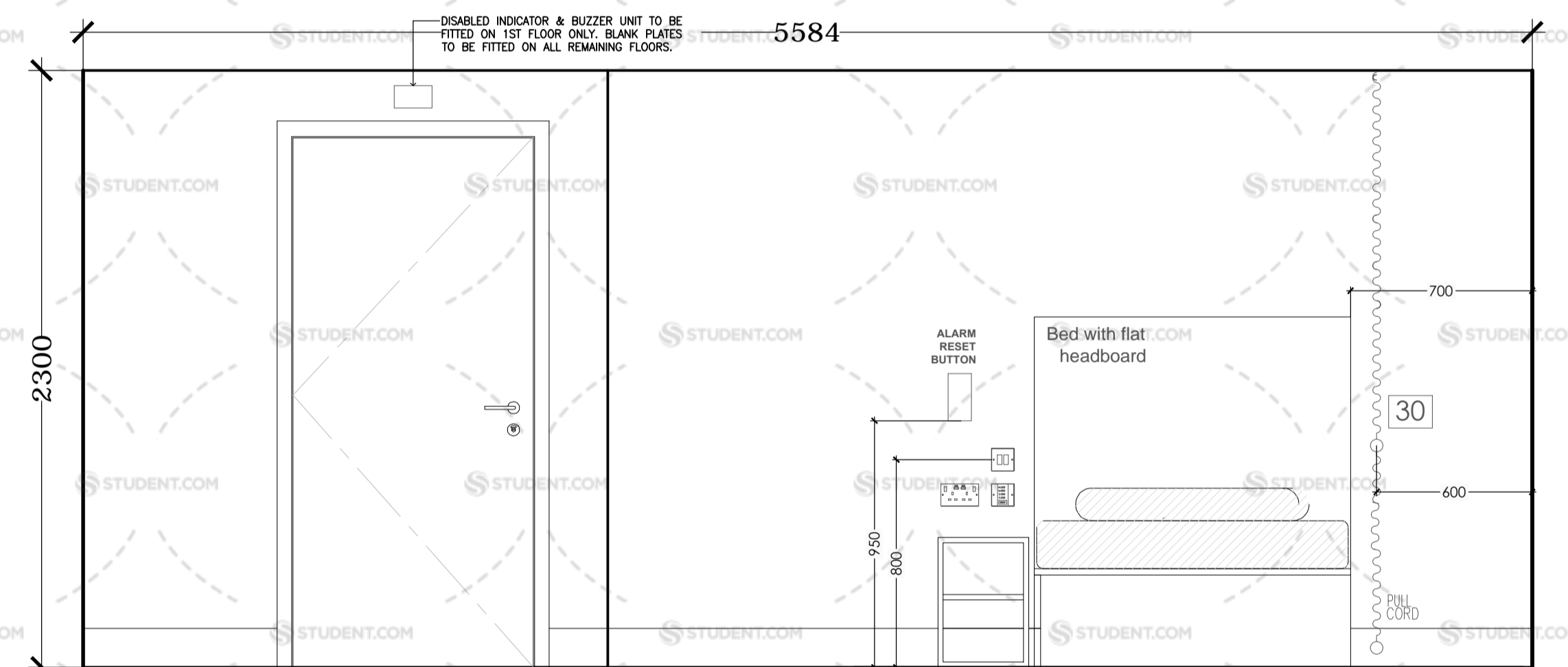
All M&E fittings and locations as per TechElec drawings.

Spot light positions shown as indicative only. Please refer to M+E specialist drawings for lighting setting out. Lighting levels to achieve:  
 100 lux - General Area  
 300 lux - Above Workstation  
 PIR operation assumed for bathrooms

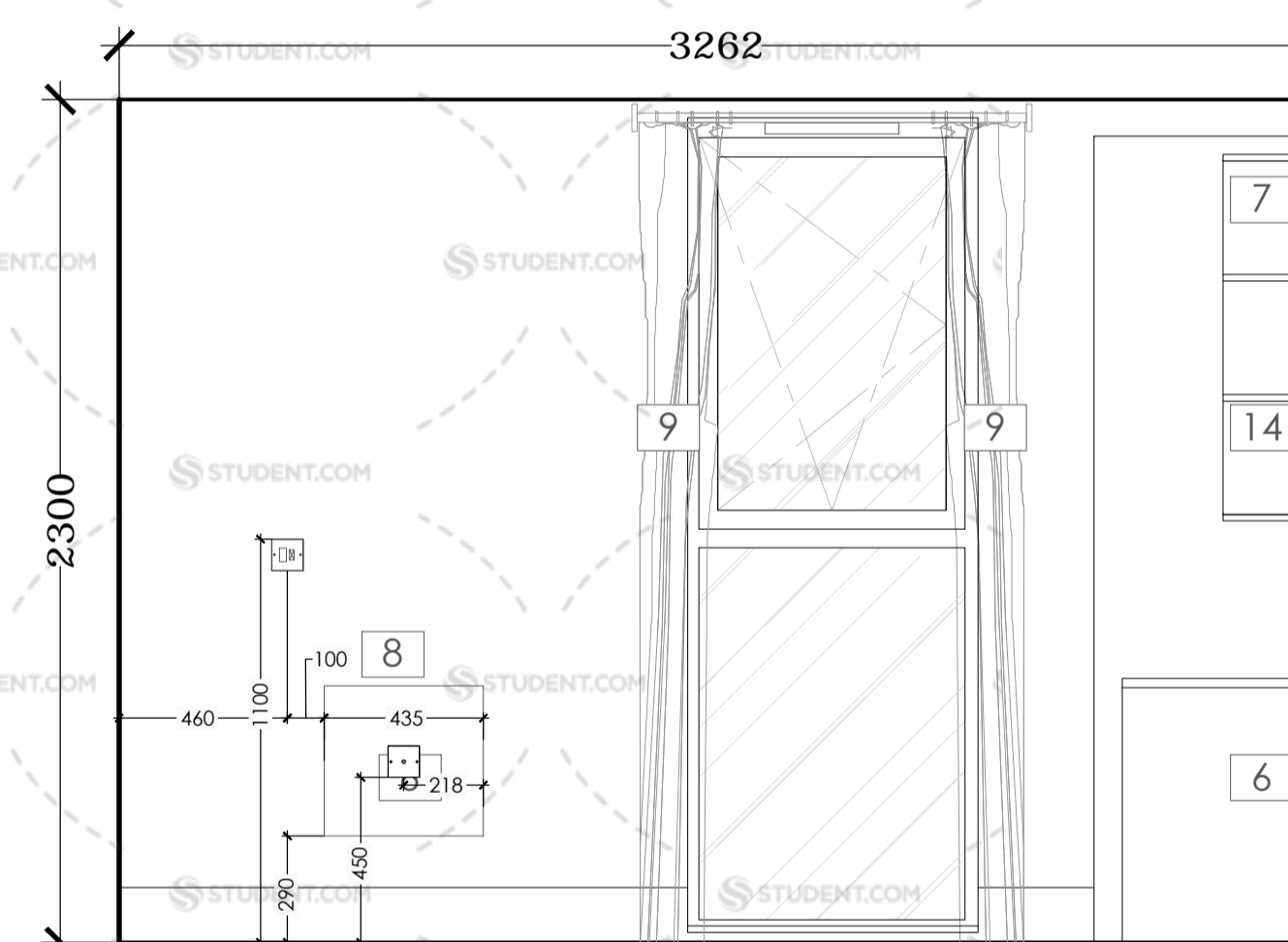
M+E to advise on sprinkler numbers required. Indicative position for 2 in each bedroom and 3 per LDK



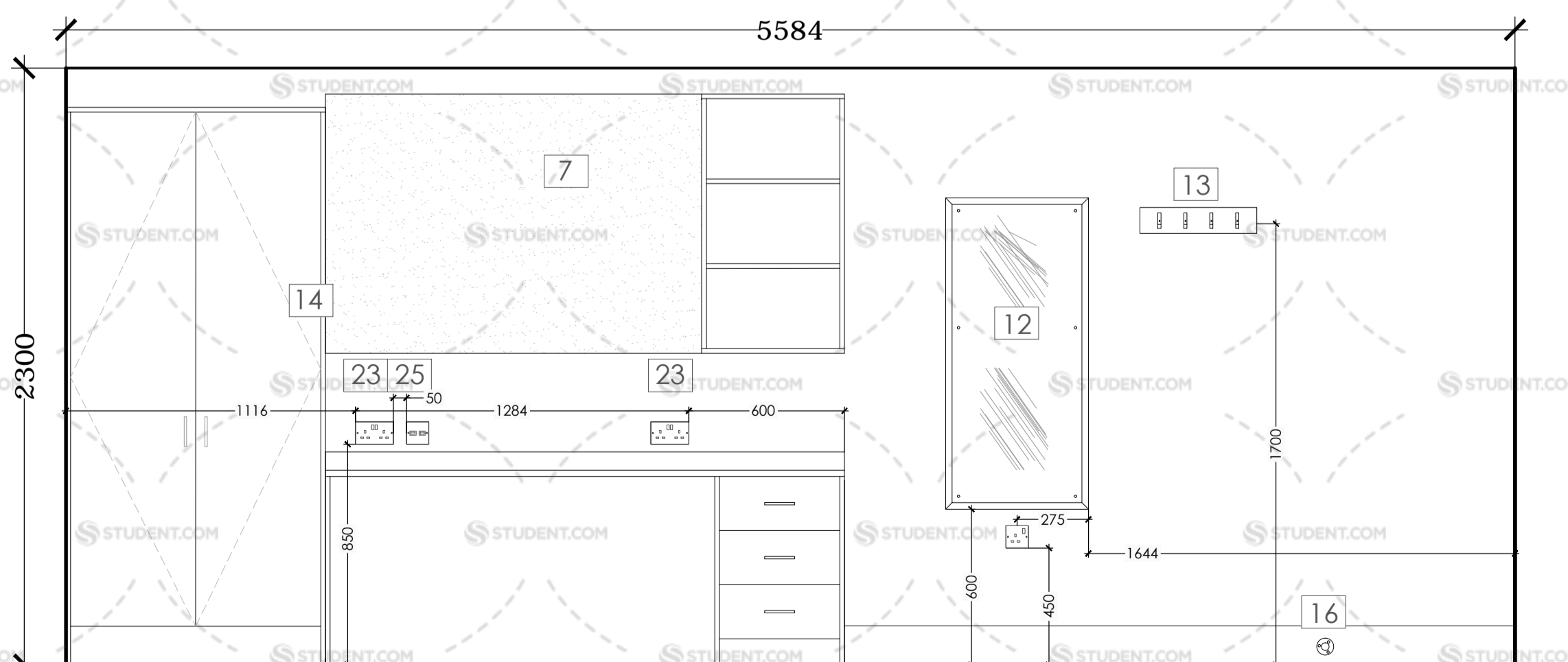
CLUSTER TYPE D-02 (FULLY FITTED ON 1st FLOOR - RETRO FITTED ON 2nd - 6th FLOORS)



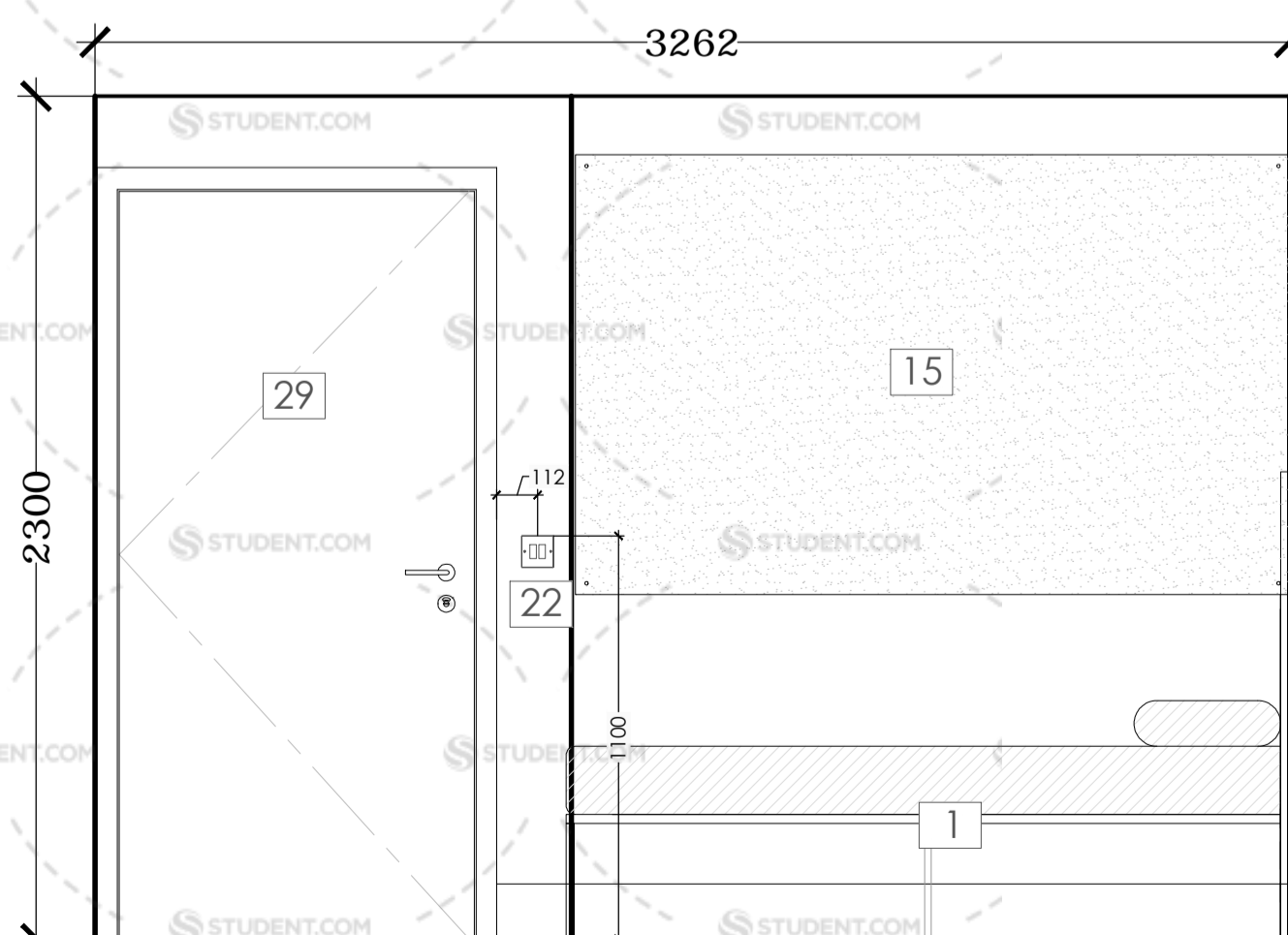
ELEVATION A



ELEVATION B



ELEVATION C



ELEVATION D

Bedrooms >>>

- 1 4ft bed including 2nr top and 2nr side hinged access panels
- 2 Bed head with integrated shelving
- 3 Wardrobe - 1000 x 600mm
- 4 Desk - 2000 x 600mm
- 5 Operators upholstered chair
- 6 Three drawer pedestal - 500mm wide
- 7 Book case - 550x1000x250mm wall mounted
- 8 Heater - 435x410mm by M&E S/C
- 9 Curtains with blackout backing to suit window
- 10 Bedside cabinet - 450x450mm(with double bed only)
- 11 Side Protector to bed
- 12 1200 x 450mm Mirror
- 13 Quadruple Coat Hook
- 14 1450 x 1000mm Fabric Covered pinboard
- 15 1950 x 1200mm Camira Lucia Fabric covered pinboard or as noted on dwg
- 16 Door stop
- 17 Vinyl flooring - Forbo Novilon Novawood
- 18 MDF bull nosed skirting painted trade glass white
- 19 Aluminium door threshold strip
- 20 Walls: Vinyl Matt. Colours to be agreed
- 21 Ceilings: Plastered and painted. Colour tbc
- 22 2 gang light switch
- 23 Double switched socket outlet
- 24 Single switched socket outlet
- 25 CAT 5E data outlet with RJ45 plate
- 26 Recessed LED downlighter independantly switched
- 27 Ceiling light - Recessed with drop glass diffuser
- 28 Optical smoke and temperature detector with sounder
- 29 Door with fob access and signage
- 30 Emergency assistance pull cord and reset contro
- 31 Heating Booster Switch
- 32 THERMOSTAT OMITTED
- 33 Wardrobe - 1200mm x 450mm
- 34 Scalloped Desk - 2000mm x 525/450mm
- 35 Indicative Sprinkler Head Location

F	13/10/14	SD	Drawing updated following KSHL review and comments
E	30/09/14	SD	Drawing updated with POD and partition setting out as requested by OC
D	25/09/14	SD	Furniture updated in line with Links updates
C	12/09/14	SD	Drawing updated to show M&E setting out and Links furniture
B	02/06/14	SD	Room updated as per Bathsystems POD
A	27/02/14	SD	Drawing updated for Construction
Rev	Date	By	Notes

CONSTRUCTION

General Notes:  
 - This drawing is copyright, reserved and remains the property of Fletcher Joseph Architects.  
 - All levels and dimensions are to be checked on site by the contractor prior to fabrication, and any discrepancies must be reported immediately to the Architect.  
 - All dimensions are to be read off this drawing and NOT scaled.  
 - All work to be executed in strict accordance with the by-laws and regulations of the local authorities.  
 - All work to conform to applicable codes of the British Standards.  
 - Where indicated/required, all drawings are to be read in conjunction with all other documents issued by Fletcher Joseph and/or other professions.



**FLETCHER JOSEPH ASSOCIATES**  
Architects

5 Millar Place • Edinburgh • EH10 5HJ

T: 0131 4475000 E: admin@fletcherjoseph.com  
 F: 0131 4469958 W: www.fletcherjoseph.com

Client: **KNIGHTSBRIDGE**  
STUDENT HOUSING LTD

Project: STUDENT ACCOMMODATION  
 FOUNTAINBRIDGE BLOCK J  
 EDINBURGH

Title: ROOM LAYOUTS + ELEVATIONS  
 Cluster Bed Type D-02

Date	Scale	Last Revision
30/08/13	A1	31/10/14
Drawn By	Checked By	Revised By
RF		SD
Drawing No.	Rev	
13598-72-15	F	